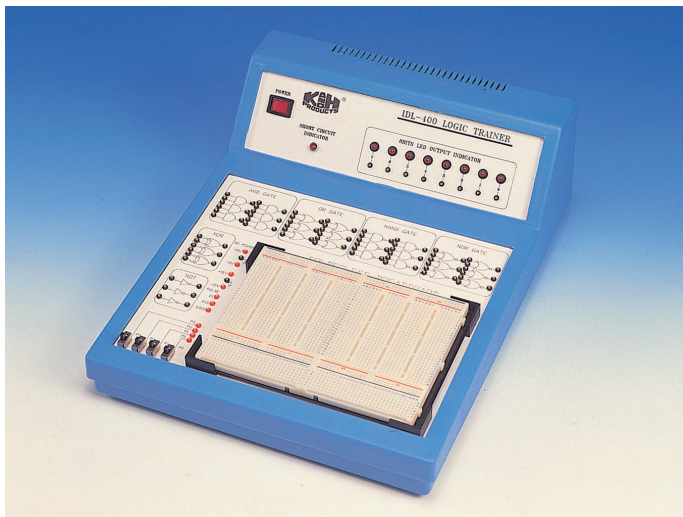


LOGIC TRAINER IDL-400



The IDL-400 logic trainer is designed for the logic beginners to enhance the comprehension of basic logical theory. The design of IDL-400 is easy to operate and easy to understand. It is equipped with various kinds of basic logic gates, debounced logical switches, LED indicators, DC power supply with short circuit protection, pulse generator and solderless breadboard.

SPECIFICATIONS

1. Basic logic gate units:

It contains 6 kinds of logic gates, i.e. AND gate X 6, OR gate X 6, NAND gate X 6, NOR gate X 6, OR gate X 3, NOT gate X 3.

Input voltage of HI level $> 2.25\text{ V}$

Input voltage of LO level $< 0.8\text{ V}$

2. DC power supply: Equipped with short circuit protection and indicator.

a. output voltage $+5\text{ V} \pm 5\%$

Max. output current 1 Amp.

Line regulation $< 50\text{ mV}$

Load regulation $< 100\text{ mV}$

b. Output voltage $-5\text{ V} \pm 5\%$

Max. output current 500 mA

Line regulation $< 25\text{ mV}$

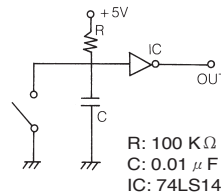
Load regulation $< 30\text{ mV}$

c. Output voltage $\pm 15\text{ V} \pm 5\%$

Max. output current 500 mA

Line regulation $< 150\text{ mV}$

Load regulation $< 150\text{ mV}$



3. Pulse generator:

3 kinds of time interval, 1 sec, 0.1 sec, 0.01 sec. Output voltage $+5\text{ V}$

4. Debounced logic switch: HI/LO

5. 8 bits LED output indicator: Max. input voltage $\leq 15\text{ V DC}$

6. Solderless breadboard: AD-200

Interconnected 1896 tie points, fitting all DIP sizes and all components with lead and solid wire AWG #22~30 (0.3~0.8 mm)

7. Accessories:

● Power cord ● User manual

8. Dimensions: 420 x 360 x 200 mm (L x W x H)

9. Weight: 4.2 Kg